



User manual

Washing Machine

# USER MANUAL

ZWP 581  
ZWQ 5102  
ZWQ 5103  
ZWQ 5122

*la vita è bella*  
**ZANUSSI**  
ITALIAN SINCE 1916

# Contents

Safety Information _____	2	Operating Problems _____	8
Product description _____	3	Detergents and Additives _____	9
How to run a wash cycle? _____	4	Technical Specifications _____	10
Daily use _____	4	Consumption values _____	10
Washing programmes _____	5	Installation _____	10
Care and cleaning _____	7	Environment concerns _____	12

Subject to change without notice

## Safety Information

Please read these points carefully before installing and using your appliance. Keep this user manual with your appliance.

### General safety

- Do not modify or attempt to modify this appliance. This would put yourself in danger.
- Ensure that all coins, safety pins, brooches, screws etc have been removed before starting a washing programme. If left in washing, they can seriously damage the appliance.
- Use the recommended quantity of detergent.
- Put small items together (socks, belts etc.) in a small linen bag or pillow case.
- Unplug and close inlet hose tap after using appliance.
- Always disconnect the power supply from the appliance before cleaning or maintenance.
- Do not machine wash clothes with ribbing, unfinished or torn material.


### Installation

- Unpack or ask for the appliance to be unpacked immediately upon delivery. Check the outside of the appliance is not damaged in any way. Report all transit damage to your retailer.
- Remove all transit bolts and packaging before installing the appliance.
- Connection to the water supply must be carried out by a qualified plumber.
- If your domestic electrical circuit needs adapting to allow the appliance to be plugged in, use a qualified electrician.
- Ensure that, after installation, the power cable is not trapped under the appliance.

- If the appliance is installed on carpeted floor, ensure that the carpet does not obstruct any ventilation ducts located at the base of the appliance.
- The appliance must be equipped with an earthed power plug which conforms to regulations.
- Before connecting your appliance to the power supply, carefully read the instructions in the chapter entitled "Electrical connection".
- Replacing the power cable should only be carried out by an authorised service engineer.
- The manufacturer cannot be held responsible for any damage resulting from incorrect installation.

### Precautions to be taken against frost

If your appliance is exposed to temperatures below 0°C, the following precautions must be taken:

- Close the tap and disconnect the inlet hose.
- Place the end of this hose and the drain hose in a basin on the floor.
- Select the Drain programme let it run until the end of the cycle.
- Disconnect the appliance from the power supply by turning the programme selector to "Stop" .
- Unplug the appliance.
- Replace the inlet hose and drain hose.

This way, the water remaining in the hoses will be drained away, avoiding any ice formation which would damage your appliance.

Before turning your appliance on again, ensure that it is installed in an area where the temperature will not fall below freezing.

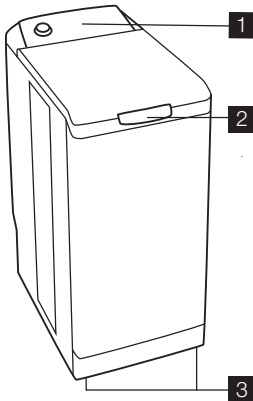
### Use

- Your appliance is intended for normal domestic use. Do not use the appliance for commercial or industrial purposes or for any other purpose.

- Refer to the instructions on the label of each item before washing.
- Do not put items into the washing machine which have had stains removed with petrol, alcohol, trichlorethylen etc. If such stain removers have been used, wait until the product has evaporated before putting these items into the drum.
- Empty pockets and unfold items.

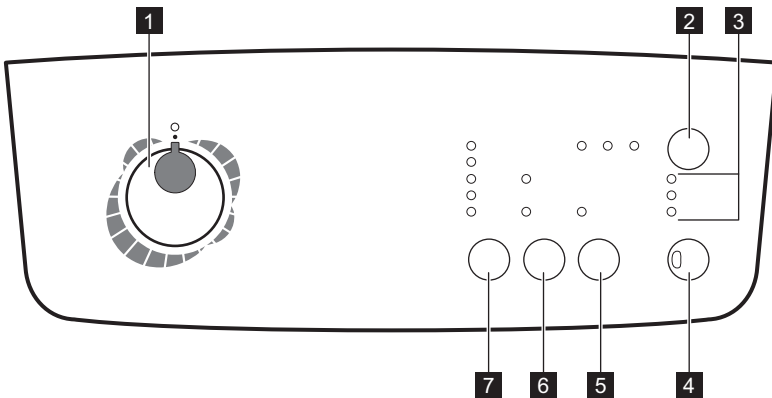
- This appliance is not intended for use by persons (including children) with reduced physical, sensory or mental capabilities, or lack of experience and knowledge, unless they have been given supervision or instruction concerning use of the appliance by a person responsible for their safety. Children should be supervised to ensure that they do not play with the appliance.

## Product description



- 1** The control panel
- 2** Lid handle
- 3** Adjustable levelling feet

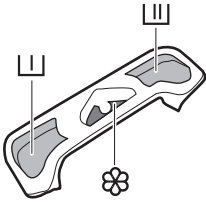
## Control panel



- 1** Programme selector
- 2** DELAY START button
- 3** Lights of cycle progress
- 4** START/PAUSE button

- 5** EXTRA RINSE button
- 6** OPTIONS button
- 7** SPIN button

## Dispenser box



Ⓟ Prewash

Ⓜ Wash

⊗ Softener (do not fill above the MAX symbol **Ⓜ**)

## How to run a wash cycle?

### Using for the first time

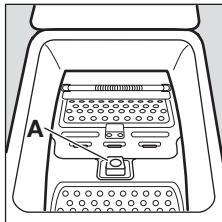
- i** • Ensure the electrical and water connections comply with the installation instructions.
- Remove the polystyrene insert and all other items inside the drum.

- Run an initial wash cycle at 90°C, without any washing but with detergent to clean the water tank.

### Daily use

#### Loading washing

- Open the lid of the appliance.
- Open the drum by depressing the locking button A: The two shutters unlock automatically.
- Load the washing, close the drum and the lid of your washing machine.



**⚠ Warning!** Before closing the lid of your appliance, ensure that the drum is properly closed :

- When the two shutters are closed,
- locking button A released.

#### Proportioning of detergents

Pour the amount of washing into the washing **Ⓜ** and pre-wash **Ⓟ** compartments if you have selected the “pre-wash” option. Pour fabric softener into the compartment **⊗** if necessary.

#### Selection of desired programme

Turn the programme selector to the required programme. The “Start/Pause” **▶||** pushbutton flashes green.

If you turn the programme selector to another programme while a cycle is in progress, the appliance will ignore the new selected programme. The “Start/Pause” **▶||** pushbutton flashes red for a few seconds.

#### Selecting the spin speed

Press the “Spin” **⊗** button to change the spin speed, if you want your washing to be spun at a different speed to the one selected by the appliance. You can also select the “Rinse hold” **Ⓛ** option.


For the maximum spin speeds see “Washing programmes”.

#### Rinse hold **Ⓛ**

By selecting this function the water of the last rinse is not emptied out to prevent the fabrics from creasing. At the end of the programme, if you have selected the “Rinse hold” **Ⓛ**, you then need to select a “Spin” **⊗** or “Drain” **Ⓛ** programme to finish the cycle and empty the water.

#### Selecting options **Ⓛ**

You must select the different options after selecting the programme and before pressing the “Start/Pause” **▶||** pushbutton (see “Programmes table”). Press the desired button(s) : the corresponding lights come on. If pressed again, the lights go out. If one of the options is not com-

patible with the selected programme, the “Start/Pause”  pushbutton flashes red.

### “Prewash” option

The appliance runs a prewash at 30°C max.


### “Quick” option

The washing time will be reduced depending on the programme selected.

### “Extra Rinse” option

The washing machine will add one or more rinses during the cycle. This option is recommended for people with sensitive skin and in soft water areas.

### Start of the programme

Press the “Start/Pause”  pushbutton to start the cycle. The corresponding light will come on green. It is normal for the programme selector to remain stationary during the cycle. The light corresponding to the current cycle is illuminated.


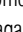
 +  : Prewash + Wash

 +  : Rinses + Spin


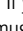
 : End of cycle

### Interrupting a programme

#### Adding washing during the first 10 minutes

Press the “Start/Pause”  pushbutton : the corresponding light will flash green while the appliance is paused. The lid can only be opened around 2 minutes after the washing machine has come to a stop. Press the “Start/Pause”  pushbutton again to continue the programme.


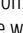

### Modifying the programme in progress


Before making any changes to the current programme, you need to pause the washing machine by pressing the “Start/Pause”  pushbutton. If the modification is not possible, the “Start/Pause”  pushbutton flashes red for a few seconds. If you still decide to change the programme, you must cancel the current programme (see below).

### Cancelling the programme

If you want to cancel the programme, turn the programme selector to the “Stop”  position.


### End of the programme

The washing machine stops automatically, the “Start/Pause”  pushbutton goes out and the light “End of cycle”  comes on. The lid can only be opened around 2 minutes after the washing machine has come to a stop. Turn the programme selector to the “Stop” position  . Remove washing. Unplug and close water inlet tap.

 **Stand by:** once the programme has finished after a few minutes the energy saving system is enabled

with the pilot lights switched on. By pressing any button the appliance will come out of the energy saving status.

## Washing programmes

Programme / Type of washing	Load	Available options
 <b>Cottons (30° - 90°)</b> : White or colour, e.g. normally soiled work clothes, bed linen, table linen, body linen, towels. Max. spin speed: 850 rpm for model ZWP581/ 1000 rpm for model ZWQ5102,ZWQ5103/ 1200 rpm for model ZWQ5122	5,5 kg	Rinse hold, Quick, Prewash, Extra rinse, Delay start
 <b>Cotton Eco (40° and 60°)</b> : White or colour, e.g. normally soiled work clothes, bed linen, table linen, body linen, towels. Max. spin speed: 850 rpm for model ZWP581/ 1000 rpm for model ZWQ5102,ZWQ5103/ 1200 rpm for model ZWQ5122	5,5 kg	Rinse hold, Prewash, Extra rinse, Delay start

Programme / Type of washing	Load	Available options
 <b>Synthetics (30° - 60°)</b> : Synthetic fabrics, body linen, coloured fabrics, non-iron shirts, blouses. Max. spin speed: 900 rpm (850 rpm for model ZWP581)	2,5 kg	Rinse hold, Quick, Prewash, Extra rinse, Delay start
 <b>Easy iron (40°)</b> : For cottons and synthetics. Reduces creasing and makes ironing easier. Max. spin speed: 900 rpm (850 rpm for model ZWP581)	1,0 kg	Rinse hold, Prewash, Extra rinse, Delay start
 Special programmes		
 <b>Delicates (30° - 40°)</b> : For all delicate materials, for example curtains. Max. spin speed: 700 rpm	2,5 kg	Rinse hold, Super quick, Prewash, Extra rinse, Delay start
 <b>Handwash (30° - 40°)</b> : Very delicate items carrying the “wash by hand” label. Max. spin speed: 850 rpm for model ZWP581/ 1000 rpm for model ZWQ5102,ZWQ5103/ 900 rpm for model 1200	1,0 kg	Rinse hold, Delay start
 <b>Wool (40°)</b> : Machine washable wool carrying the labels “pure new wool, machine washable, does not shrink”. Max. spin speed: 850 rpm for model ZWP581/ 1000 rpm for model ZWQ5102,ZWQ5103/ 900 rpm for model ZWQ5122	1,0 kg	Rinse hold, Delay start
 <b>Sport intensive (40°)</b> : For normally and heavily soiled outdoor sport clothes. machine will add automatically a prewash phase before the main wash to eliminate mud stains. <sup>1)</sup> Max. spin speed: 900 rpm (850 rpm for model ZWP581)	2,5 kg	Rinse hold, Extra rinse, Delay start
 <b>Curtains (40°)</b> : For washing curtains. The Prewash option is activated. Max. spin speed: 700 rpm	2,5 kg	Rinse hold, Extra rinse, Delay start
 <b>Rinses</b> : Hand washed items can be rinsed in this programme. Max. spin speed: 850 rpm for model ZWP581/ 1000 rpm for model ZWQ5102,ZWQ5103/ 1200 rpm for model ZWQ5122	5,5 kg	Rinse hold, Extra rinse, Delay start
 <b>Drain</b> : Runs an empty cycle after a Rinse hold option.	5,5 kg	

Programme / Type of washing	Load	Available options
<b>Spin</b> : A spin cycle from 500 to 850 rpm for model ZWP581/ 1000 rpm for model ZWQ5102,ZWQ5103/ 1200 rpm for model ZWQ5122 after a Rinse hold option.	5,5 kg	Delay start

1) We recommend not to add any detergent for prewash phase.

## Care and cleaning

Unplug the appliance before cleaning.

### Descaling the appliance

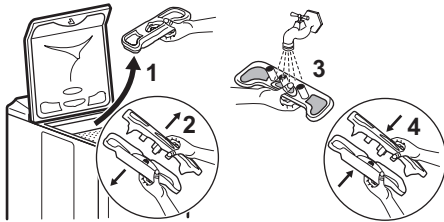
To descale the appliance, use an appropriate non-corrosive product designed for washing machines. Read product label for recommended amounts and how often descaling should be carried out.

### The exterior

Use warm soapy water to clean the exterior of the appliance. Never use alcohol, solvents or similar products.

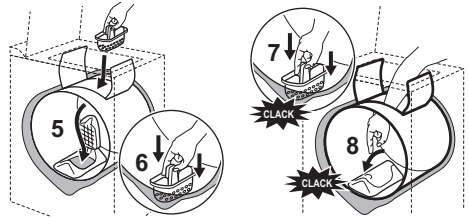
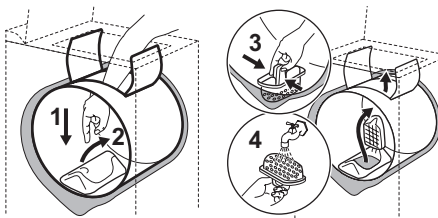
### Dispenser box

To clean, proceed as follows :

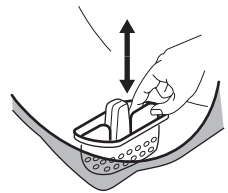


### Object trap

Regularly clean out the object trap which is located at the bottom of the drum :

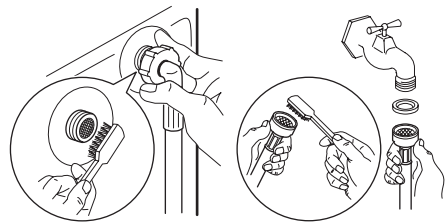


Check if the filter being coupled well before closing the trap to pull up and down the central wall.



### Water inlet filters

To clean, proceed as follows :



# Operating Problems

Numerous checks were carried out on your appliance before it left the factory. However, should you notice a mal-

function, please refer to the sections below before contacting the after-sales service.

Problems	Causes
The appliance doesn't start or doesn't fill:	<ul style="list-style-type: none"><li>• the appliance isn't plugged in correctly, the electrical installation isn't working, there is a power failure,</li><li>• the lid of your appliance and the drum shutters aren't closed firmly,</li><li>• the programme start command hasn't been properly selected,</li><li>• the water supply has been cut off, the water inlet tap is closed,</li><li>• the water inlet filters are dirty (see "Care and cleaning").</li></ul>
The appliance fills but empties straight away:	<ul style="list-style-type: none"><li>• the drainage U-piece is fixed too low (see "Installation").</li></ul>
The appliance doesn't rinse or doesn't empty:	<ul style="list-style-type: none"><li>• the drain hose is blocked or bent,</li><li>• the drainage filter is obstructed (see "Care and cleaning"),</li><li>• the out of balance detector has been activated: washing is unevenly distributed in the drum,</li><li>• the "Drain" programme or "Night Cycle" or "Rinse hold" option have been selected,</li><li>• the height of the drainage U-piece is unsuitable.</li></ul>
The appliance doesn't spin:	<ul style="list-style-type: none"><li>• balance problem with the laundry load: add more laundry or manually adjust the items in the drum.</li></ul>
You have found water around the appliance:	<ul style="list-style-type: none"><li>• too much detergent has caused foam to overflow,</li><li>• the detergent is unsuitable for machine washing,</li><li>• the drainage U-piece isn't attached correctly,</li><li>• the water inlet hose is leaking.</li></ul>
The washing results are not satisfactory :	<ul style="list-style-type: none"><li>• the detergent is unsuitable for machine washing,</li><li>• there is too much washing in the drum,</li><li>• the wash cycle is unsuitable,</li><li>• there isn't enough detergent.</li></ul>
The appliance vibrates, is noisy:	<ul style="list-style-type: none"><li>• all packaging have not been removed from the appliance (see "Installation"),</li><li>• the appliance isn't level and is unbalanced (see "Installation"),</li><li>• the appliance is too close to the wall or furniture,</li><li>• washing is unevenly distributed in the drum, the load is too small,</li><li>• the appliance is in running in period, noise will disappear with time.</li></ul>



Problems	Causes
The wash cycle is much too long:	<ul style="list-style-type: none"> <li>• the water inlet filters are dirty (see “Care and cleaning ”),</li> <li>• the power or water supply has been cut off,</li> <li>• the motor overheating detector has been activated,</li> <li>• the water inlet temperature is lower than usual,</li> <li>• the foam detection security system has been activated (too much detergent) and the washing machine has begun draining the foam,</li> <li>• the out of balance detector has been activated: an extra phase has been added to distribute washing more evenly in the drum.</li> </ul>
The appliance stops during a wash cycle:	<ul style="list-style-type: none"> <li>• the water or electricity supply is defective,</li> <li>• a “Rinse hold” has been selected,</li> <li>• the drum shutters are open.</li> </ul>
The lid doesn't open at the end of the cycle:	<ul style="list-style-type: none"> <li>• the temperature inside the drum is too high,</li> <li>• the lid unlocks 1 - 2 minutes after the end of the cycle.</li> </ul>
Softener runs directly into the drum when filling the dispenser box:	<ul style="list-style-type: none"> <li>• you have gone past the MAX indicator.</li> </ul>
The drainage pump runs constantly, even when the appliance is inactive:	<ul style="list-style-type: none"> <li>• the anti-flooding security system has been activated, please proceed as follows : <ul style="list-style-type: none"> <li>- close the water inlet tap,</li> <li>- empty the appliance for 2 minutes before unplugging,</li> <li>- call the after-sales service.</li> </ul> </li> </ul>
The “Start/Pause” pushbutton <sup>1)</sup> flashes red <sup>2)</sup> :	<ul style="list-style-type: none"> <li>• the lid is not closed properly,</li> <li>• the drainage filter is obstructed,</li> <li>• the drain hose is blocked or bent,</li> <li>• the drain hose is fixed to high (see “Installation”),</li> <li>• the drainage pump is blocked,</li> <li>• the standpipes blocked,</li> <li>• the water tap is closed, the water supply has been cut off.</li> </ul>

1) On some models, the audible signals can sound

2) After solving any problems, press “Start/Pause” pushbutton to restart the interrupted programme.

## Detergents and Additives

Only use detergents and additives designed for use in a washing machine. We do not recommend mixing different types of detergents. This may spoil the washing. There are no restrictions on the use of powder detergents. Liquid detergents must not be used when a prewash has been se-

lected. For cycles without prewash, pour the liquid detergent directly into the drum or use a special dosing device (supplied by the detergent's manufacturer). Detergent tablets or doses must be placed in the detergent compartment of your appliance's dispenser box.

## Technical Specifications

DIMENSIONS		Height Width Depth	850 mm 400 mm 600 mm
LINE VOLTAGE /FREQUENCY POWER CONSUMPTION FUUSE			230 V / 50 Hz 2300 W 10 A
Level of protection against ingress of solid particles and moisture			IPX4
Water supply			Cold water
WATER PRESSURE		Minimum Maximum	0,05 MPa (0,5 bar) 0,8 MPa (8 bar)
Connection to water supply			Type 20/27

## Consumption values

Programme	Energy consumption (kWh) <sup>1)</sup>	Water consumption (litre) <sup>1)</sup>	Programme duration (Minutes) <sup>1)</sup>
White Cottons 90 °C	2.2	67	160
Cottons 60 °C	1.3	62	145
Cottons 40 °C	0.75	62	140
Synthetics 40 °C	0.65	48	80
Delicates 30 °C	0.3	53	60
Wool 30 °C	0.4	48	71
Handwash 30 °C	0.4	48	61

1) The consumption information shown in this chart is indicative. It can vary depending on the quantity and the type of laundry, on the temperature of the water supply and on the ambient temperature.

### Standard programmes for the Energy Label consumption values

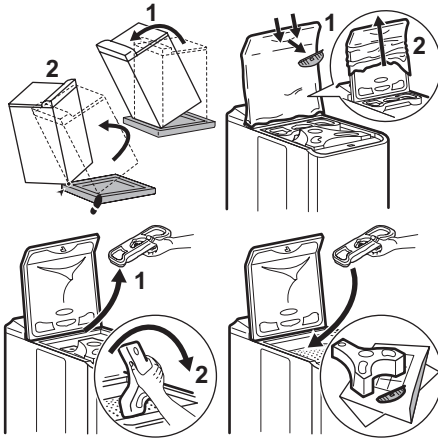
The cotton 60 °C economy and cotton 40 °C economy are the standard cotton programmes for normally soiled cotton laundry. They are suitable to clean normally soiled

cotton laundry and they are the most efficient programmes in terms of combined energy and water consumption for washing that type of cotton laundry. They agree with EN60456.

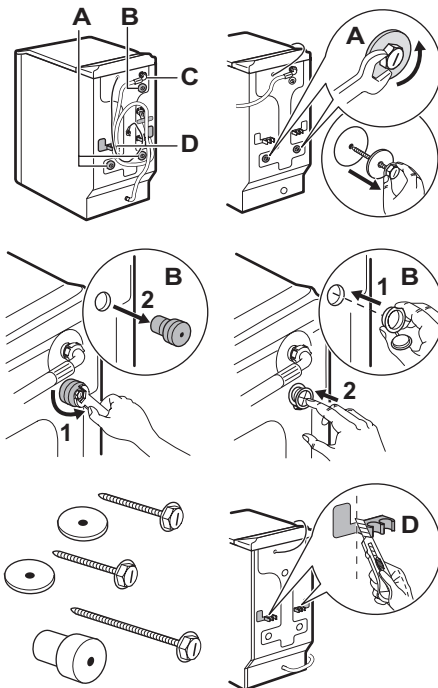
## Installation

Remove all protective packaging for transit before using for the first time. Keep in case needed for future transit: Transporting a non-secured appliance may damage internal components and cause leakages and malfunctions. The appliance can also be damaged through physical contact.

## Unpacking



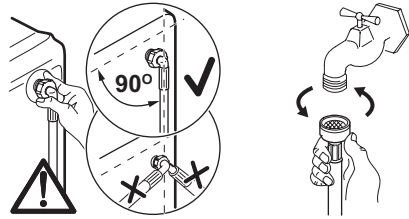
## Untying



Keep the transit bolts for when you move the appliance.

To install the appliance at the same level as neighboring furniture, cut these plastic pieces.

## Water supply



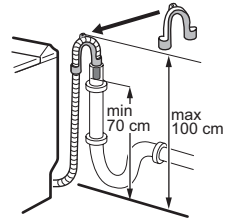
In case of necessity move the inlet hose in the direction shown on picture. To make this loose the inlet hose ring nut and position the inlet hose downwards as drawn on picture.

Tighten the ring nut back and make sure there are no leaks.

Open the water inlet tap. Check there are no leaks. The water inlet hose can not be extended. If it is too short, please contact the after-sales service.

## Drainage

Fit the U-piece on the drainage hose. Place everything in a drainage point (or in a sink) at a height of between 70 and 100 cm. Ensure it is positioned securely. Air must be able to enter the end of the hose, to avoid any risk of siphoning.



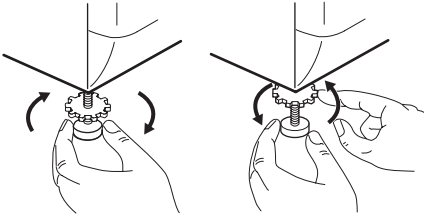
The drain hose must never be stretched. If it is too short, contact an engineer.

## Electrical connection

This washing machine must only be connected in single-phased 230 V. Check the fuse size: 13 A for 230 V. The appliance must not be connected with an extension lead or multi-plug adaptor. Ensure that the plug is earthed and that it is in accordance with current regulations.


## Positioning

Position the appliance on a flat and hard surface in a ventilated location. Ensure the appliance does not come into contact with the wall or other furniture. Accurate levelling avoids vibrations, noise and prevents the appliance from moving when running.





## Environment concerns

---


The symbol  on the product or on its packaging indicates that this product may not be treated as household waste. Instead it should be taken to the appropriate collection point for the recycling of electrical and electronic equipment. By ensuring this product is disposed of correctly, you will help prevent potential negative consequences for the environment and human health, which could otherwise be caused by inappropriate waste handling of this product. For more detailed information about recycling of this product, please contact your local council, your household waste disposal service or the shop where you purchased the product.

### Disposing of the appliance

 All materials carrying the  symbol are recyclable. Dispose of them at a waste collection site (enquire

at your local council) for collection and recycling. When disposing of your appliance, remove all parts which could be dangerous to others: cut off the power supply cable at the base of the appliance.

### Protecting the environment

 To save water and energy and therefore help protect the environment, we recommend the following:

- Whenever possible, use the appliance at full capacity and avoid partial loads.
- Only use the prewash and soak programmes for heavily soiled items.
- Use an appropriate amount of detergent for the hardness of the water, the size of the load and how soiled the washing is.









[www.zanussi.com/shop](http://www.zanussi.com/shop)

